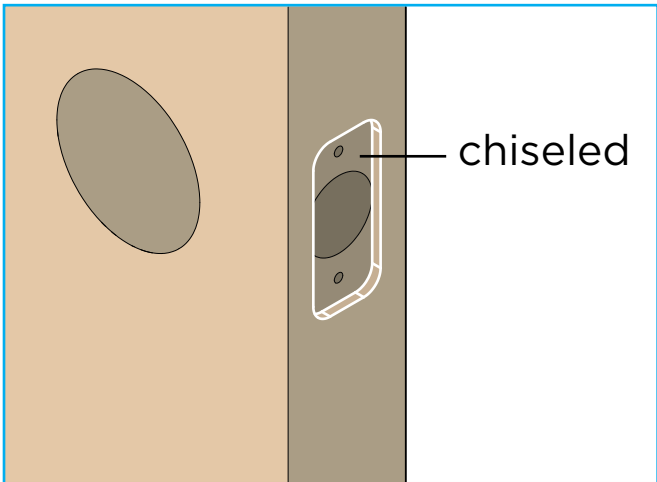
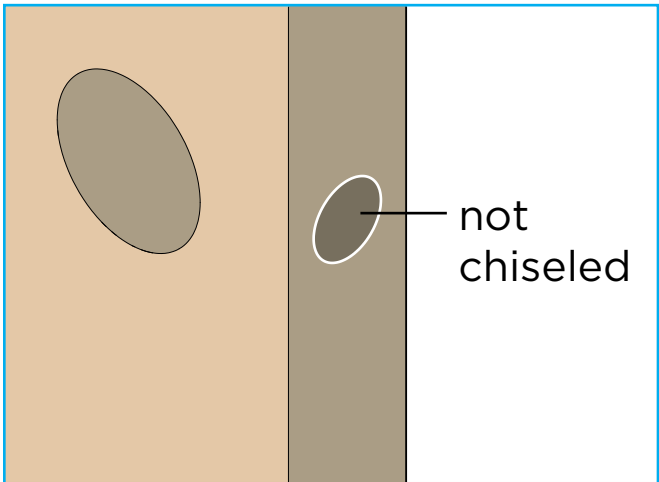


2 Install latch and strike

Is the door edge chiseled?



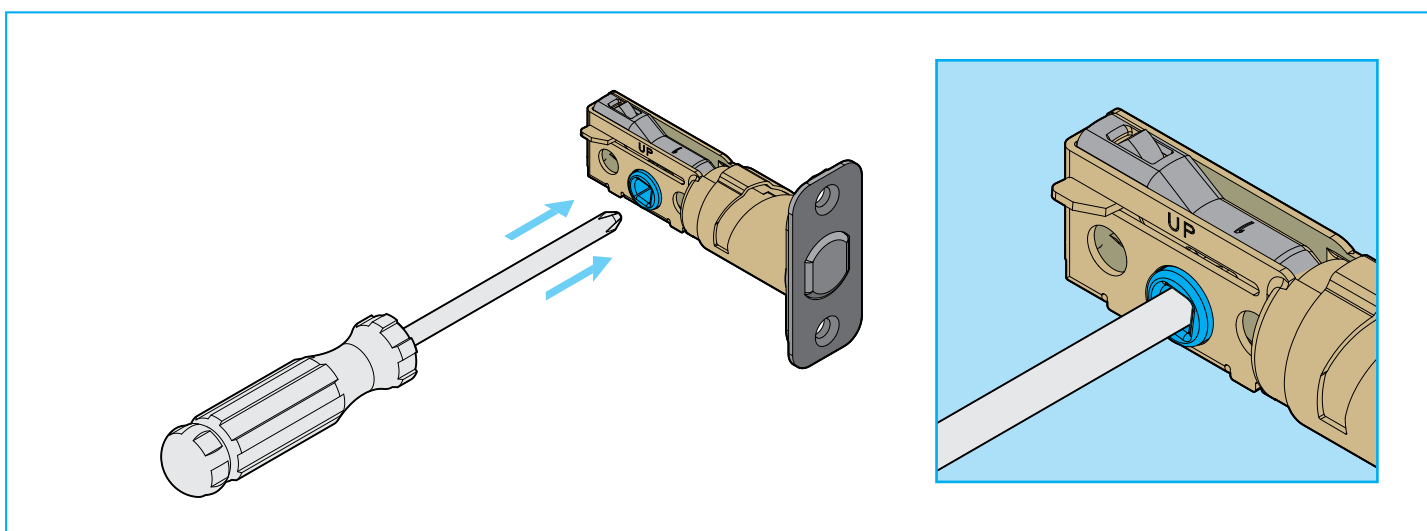
YES



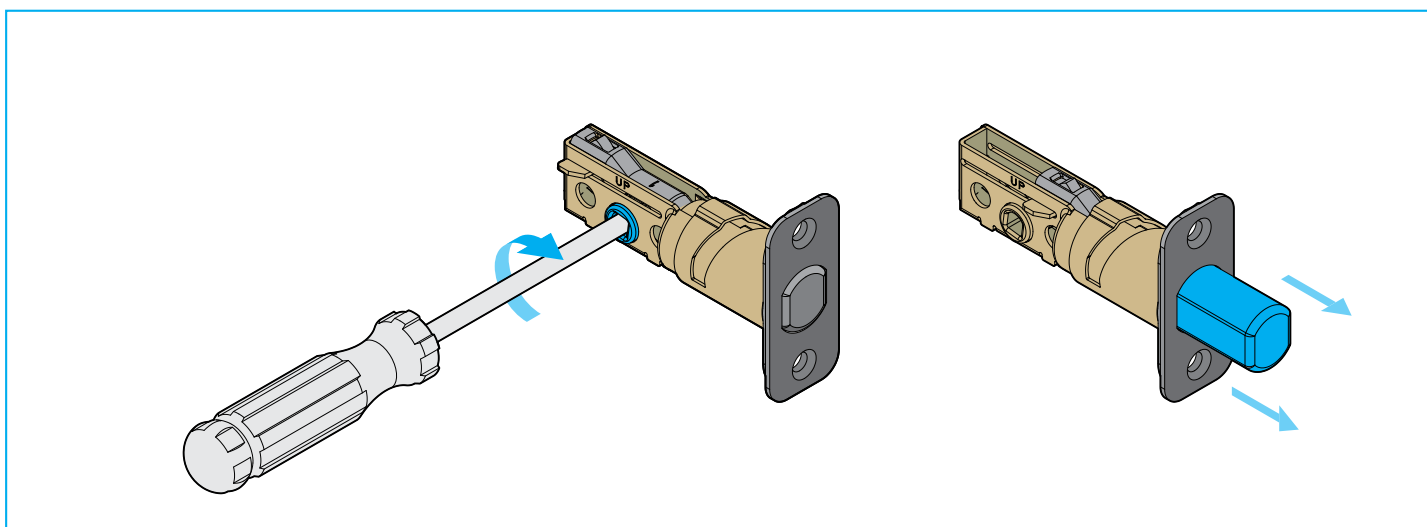
NO

2 Install latch and strike

Locate latch with rectangular faceplate and insert screwdriver into latch cam.

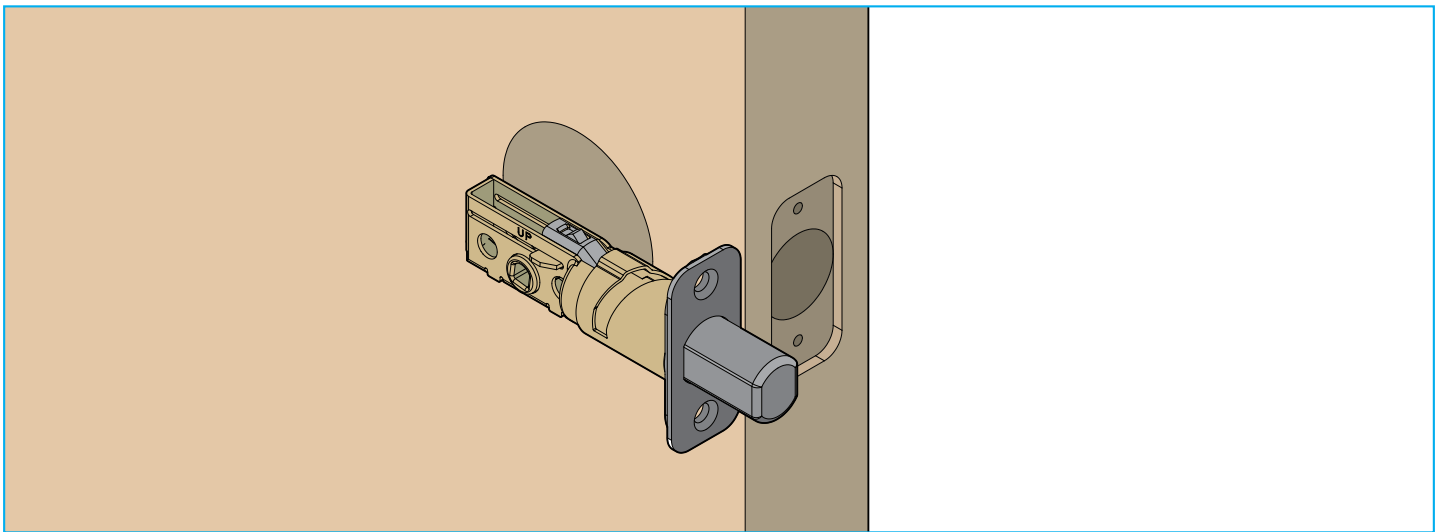


Rotate screwdriver to extend latch bolt.

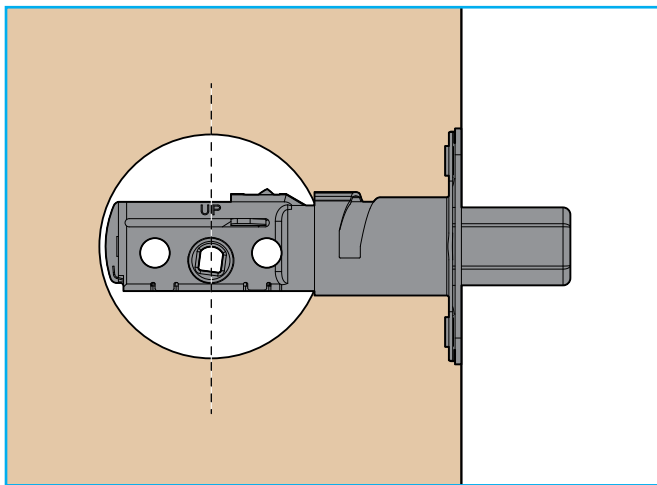


2 Install latch and strike

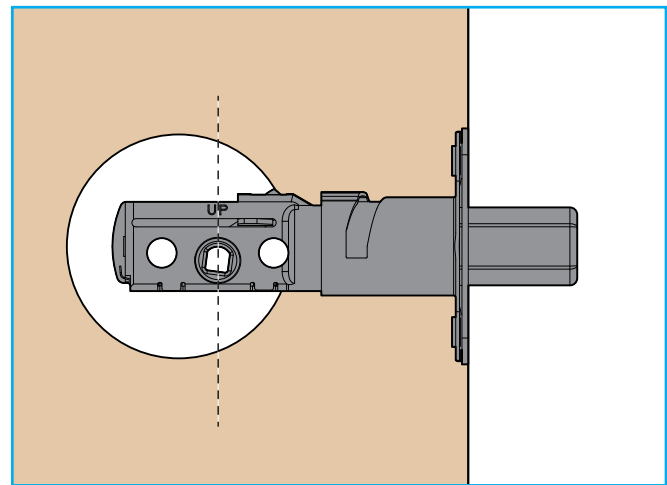
Hold the latch in front of the door hole, with the latch face flush against the door edge.



Are the latch holes centered in the door?



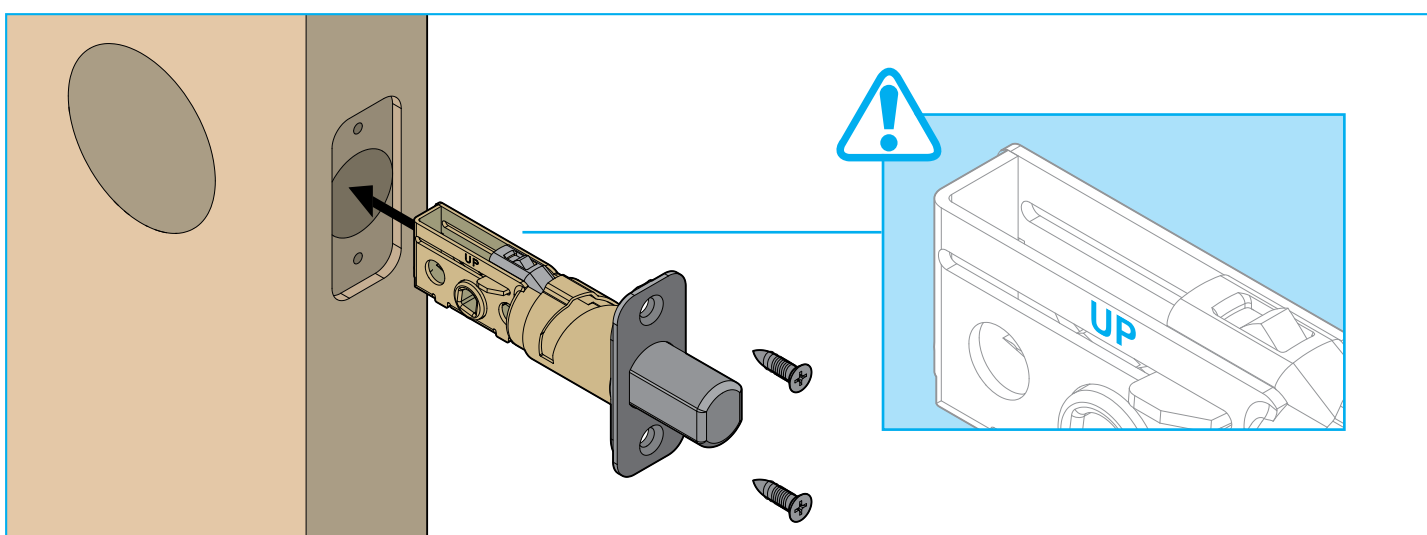
YES



NO

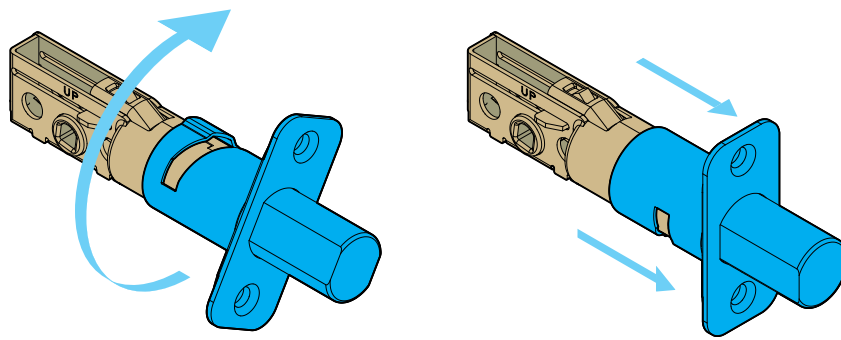
2 Install latch and strike

Install latch with the provided screws, making sure the word “UP” faces upward.



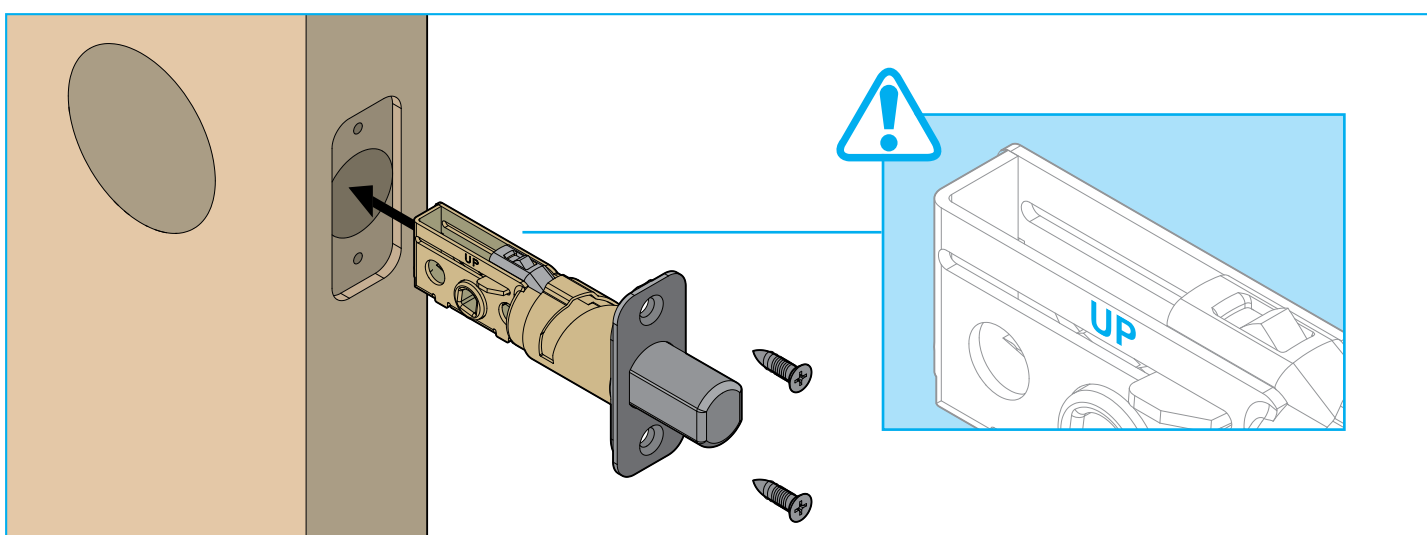
2 Install latch and strike

Rotate the latch face 180° to extend the latch.



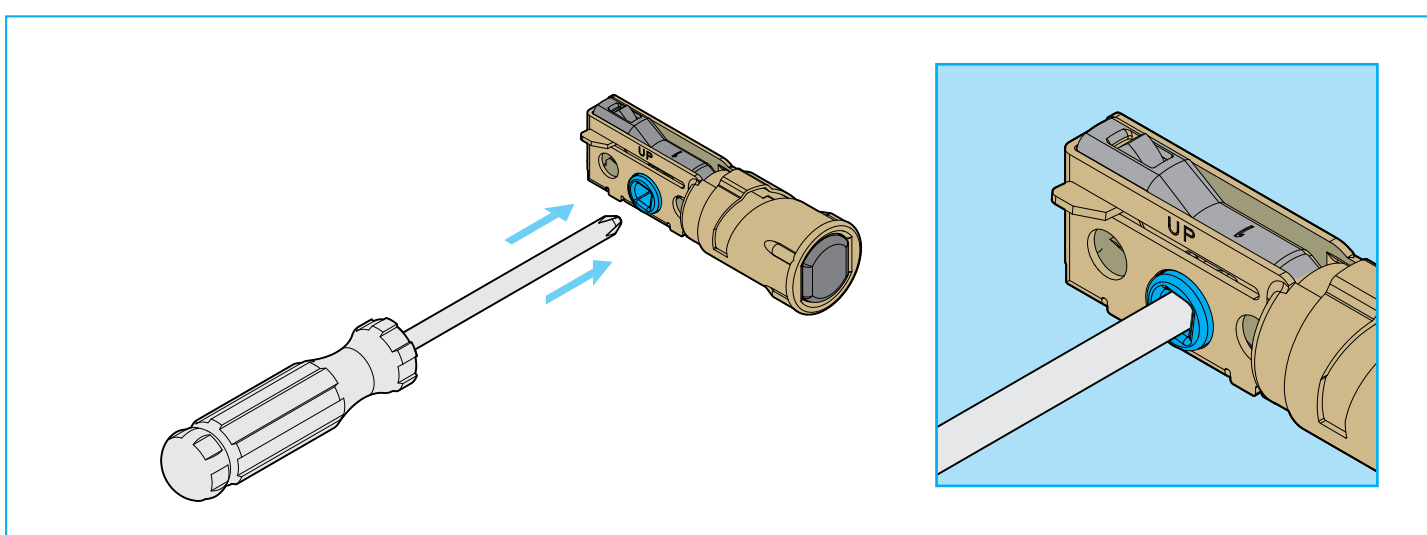
2 Install latch and strike

Install latch with the provided screws, making sure the word “UP” faces upward.

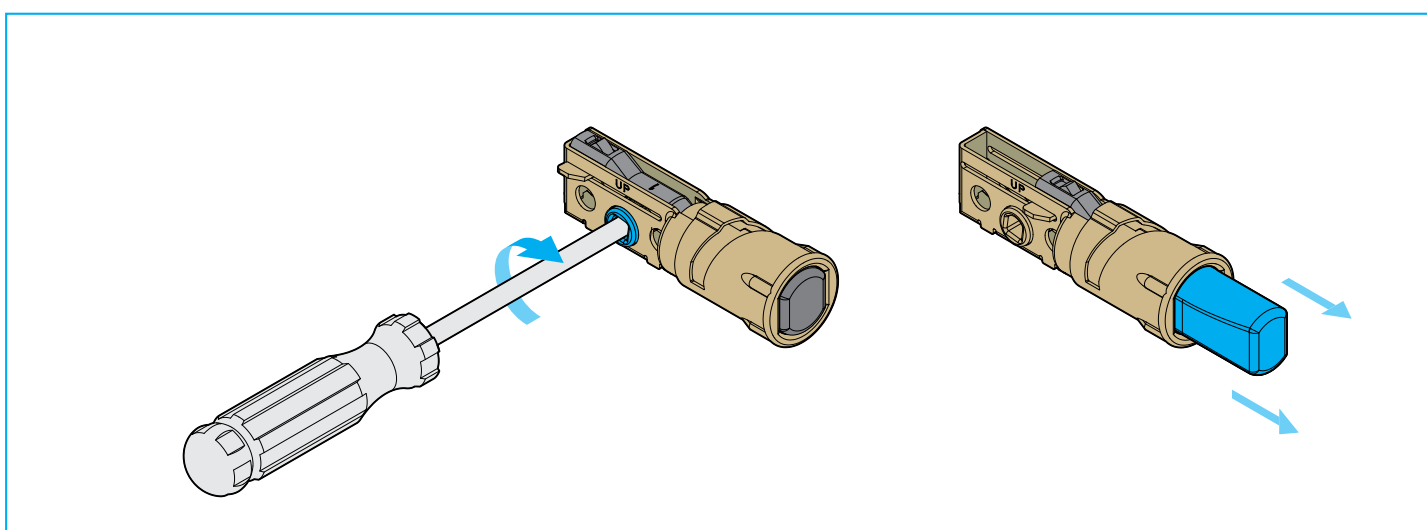


2 Install latch and strike

Locate latch with rectangular faceplate and insert screwdriver into latch cam.

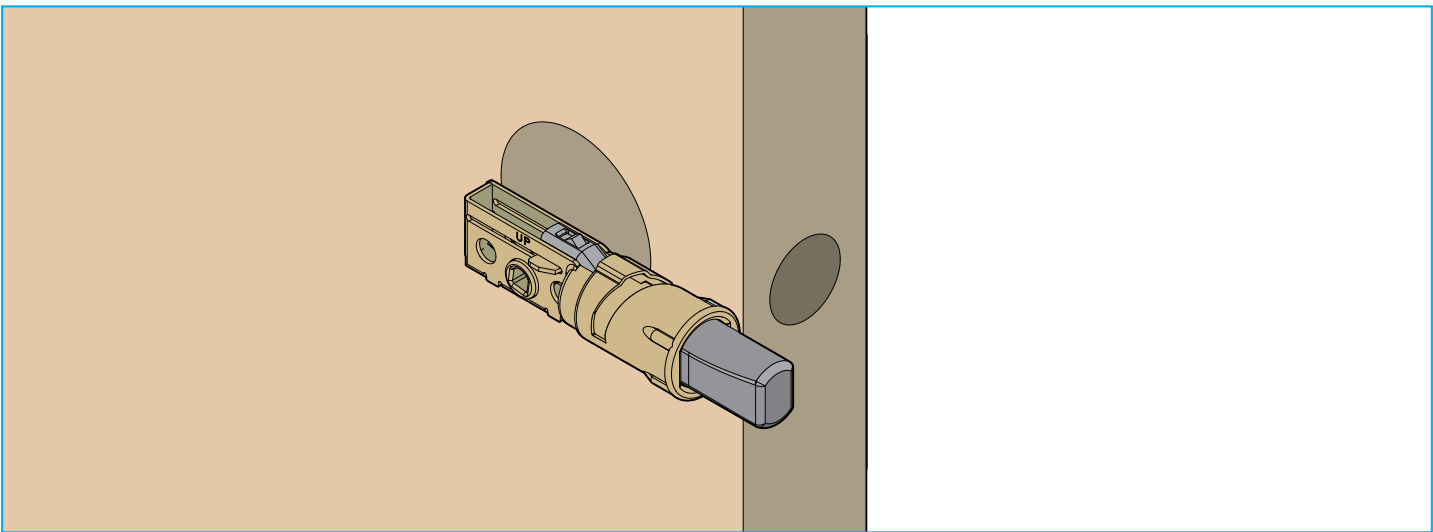


Rotate screwdriver to extend latch bolt.

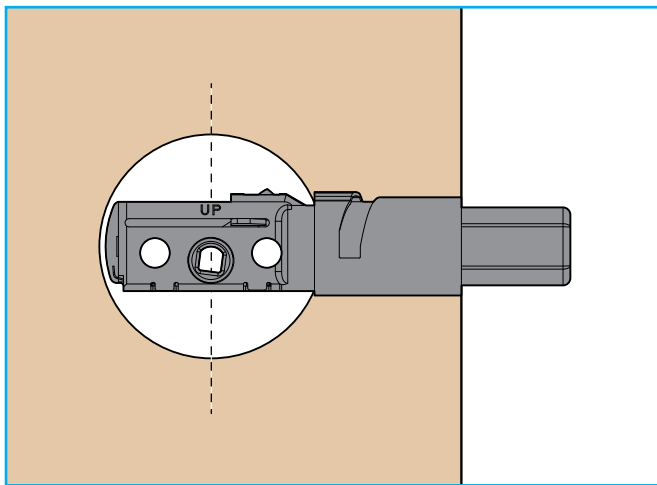


2 Install latch and strike

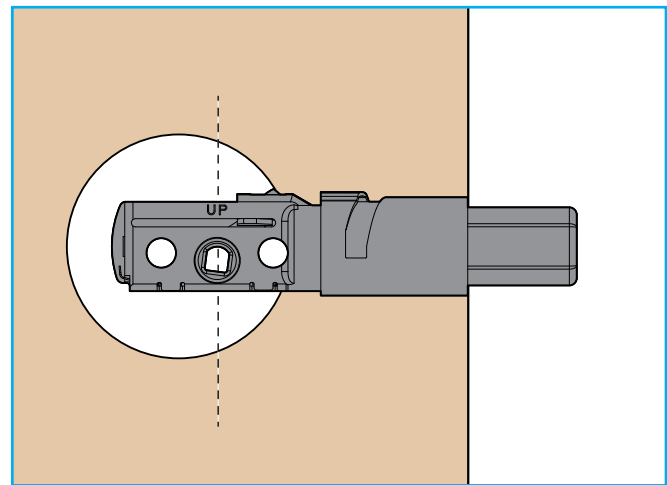
Hold the latch in front of the door hole, with the latch face flush against the door edge.



Are the latch holes centered in the door?



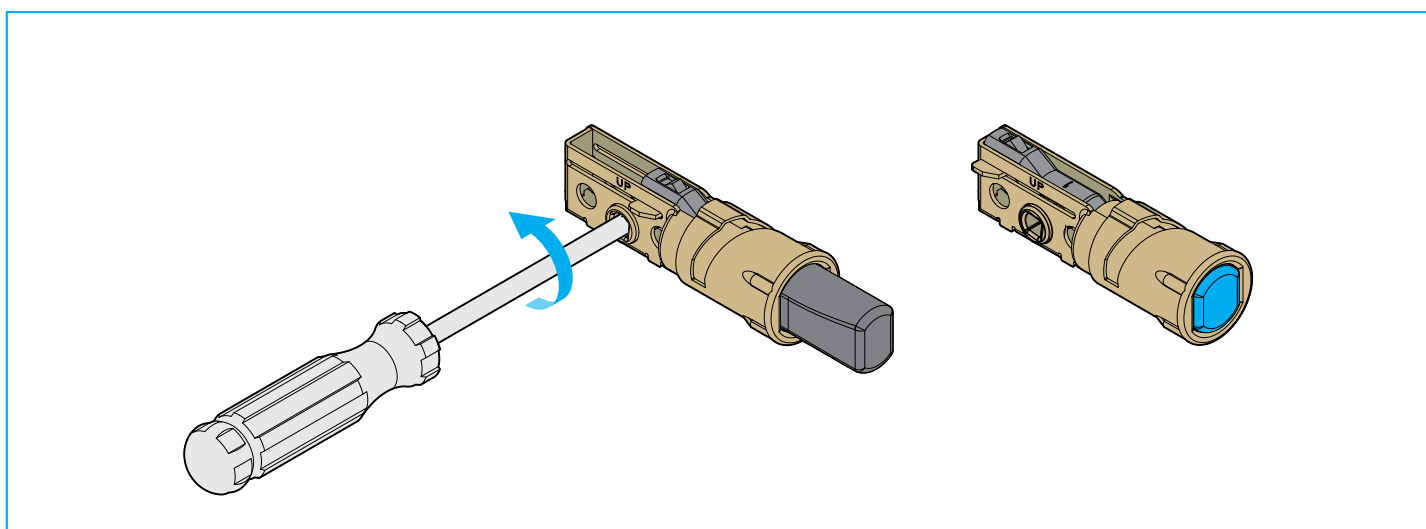
YES



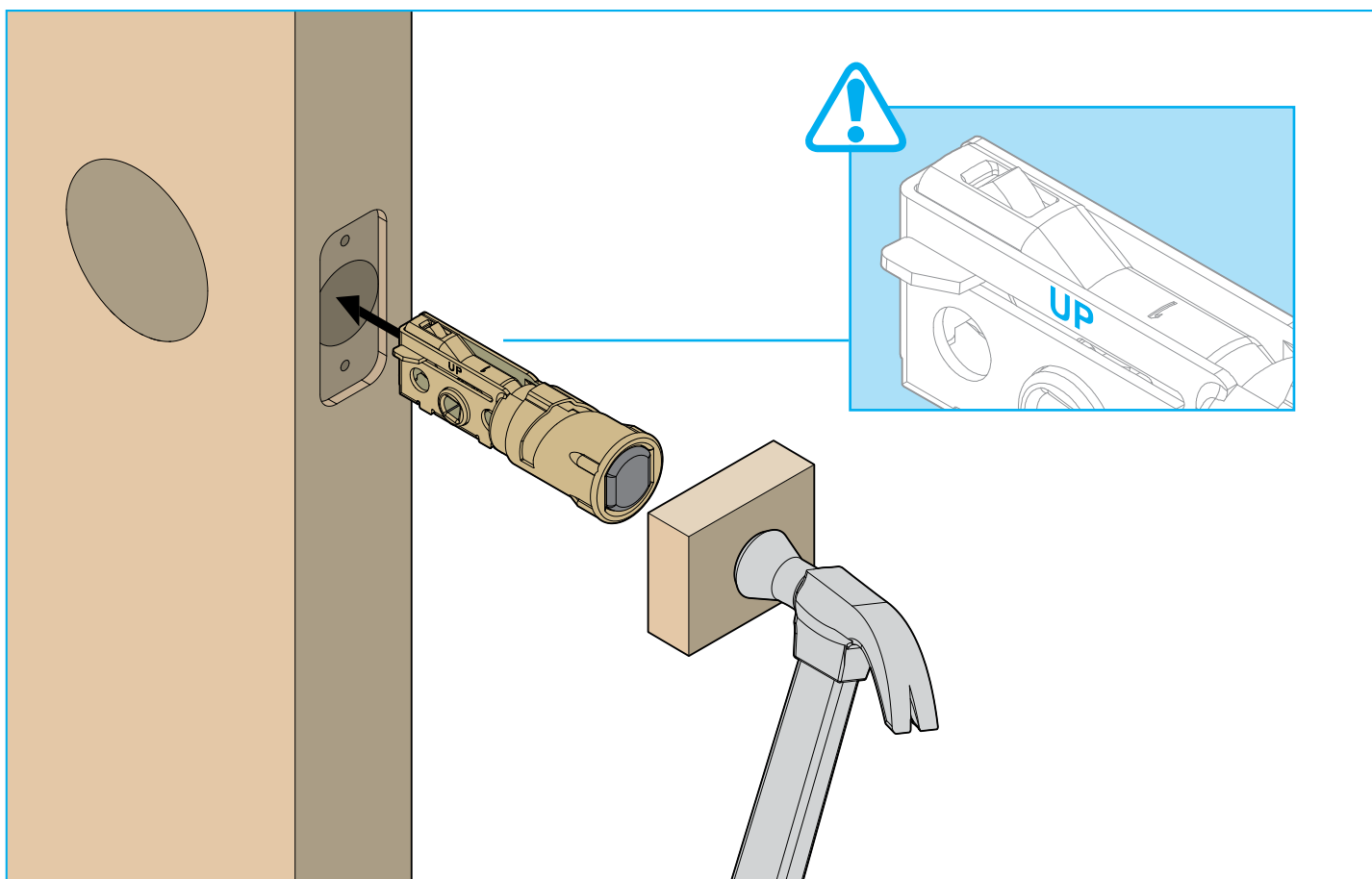
NO

2 Install latch and strike

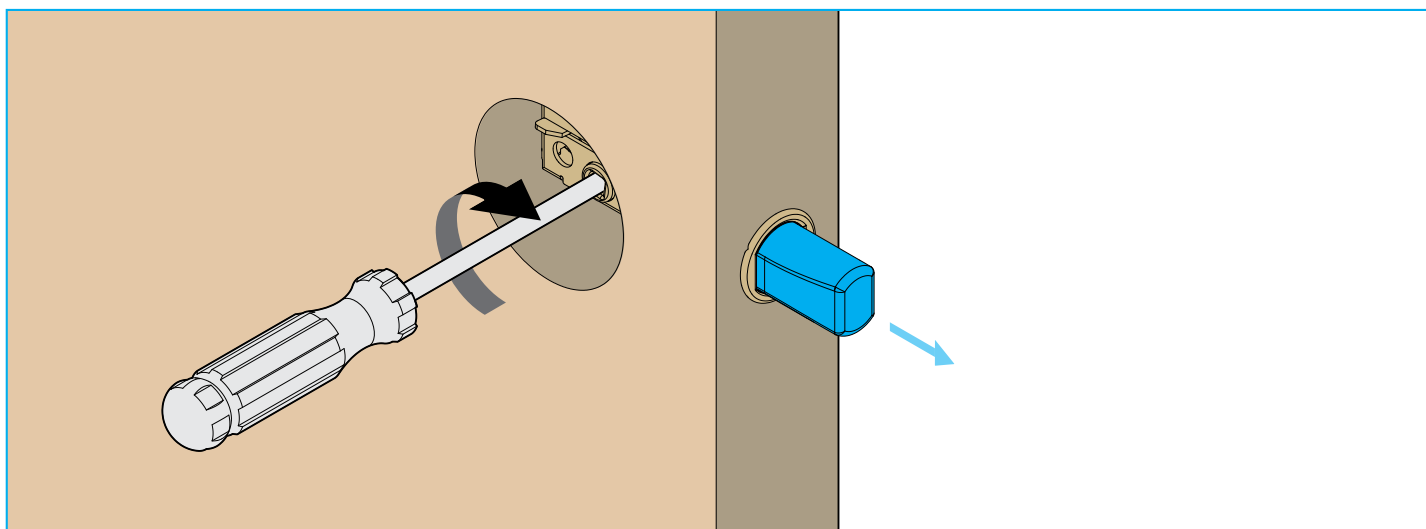
Use screwdriver to retract latch bolt.



Use a hammer and wood block to drive the latch into the door until it is flush with the door edge. Make sure the word “UP” faces upward.

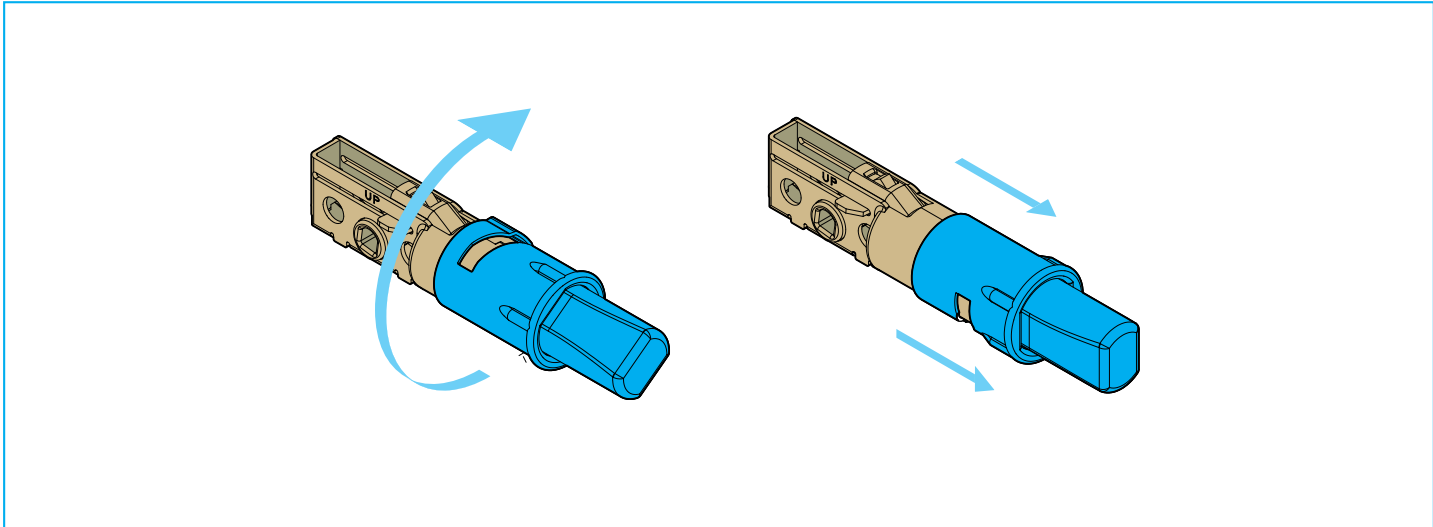


Use screwdriver to extend latch bolt again.



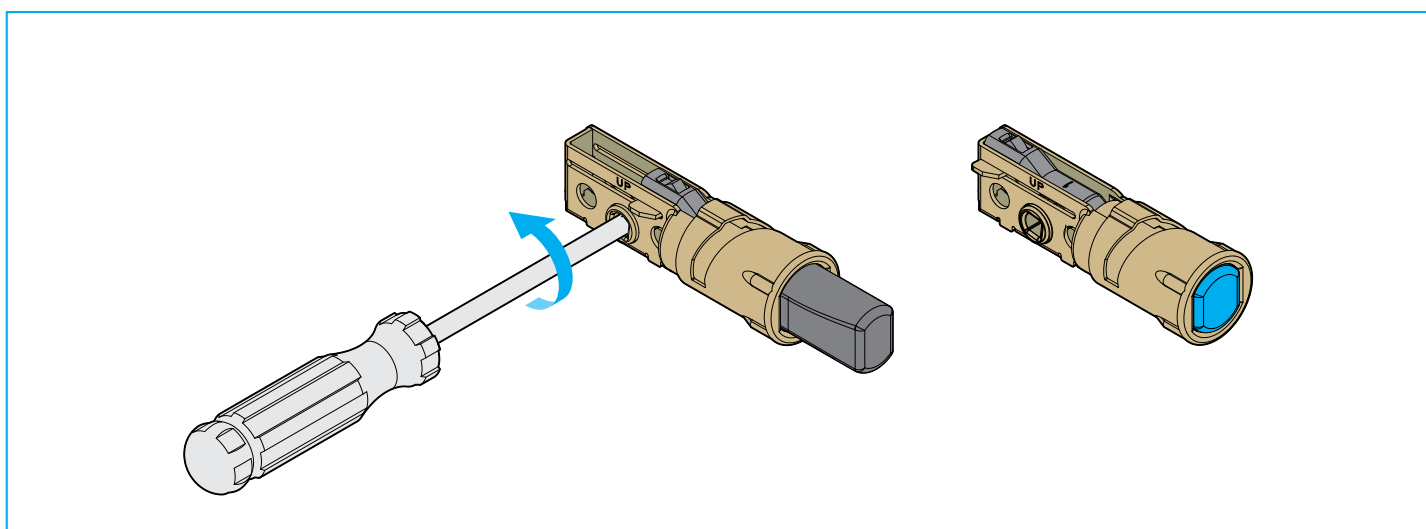
2 Install latch and strike

Rotate the latch face 180° to extend the latch.

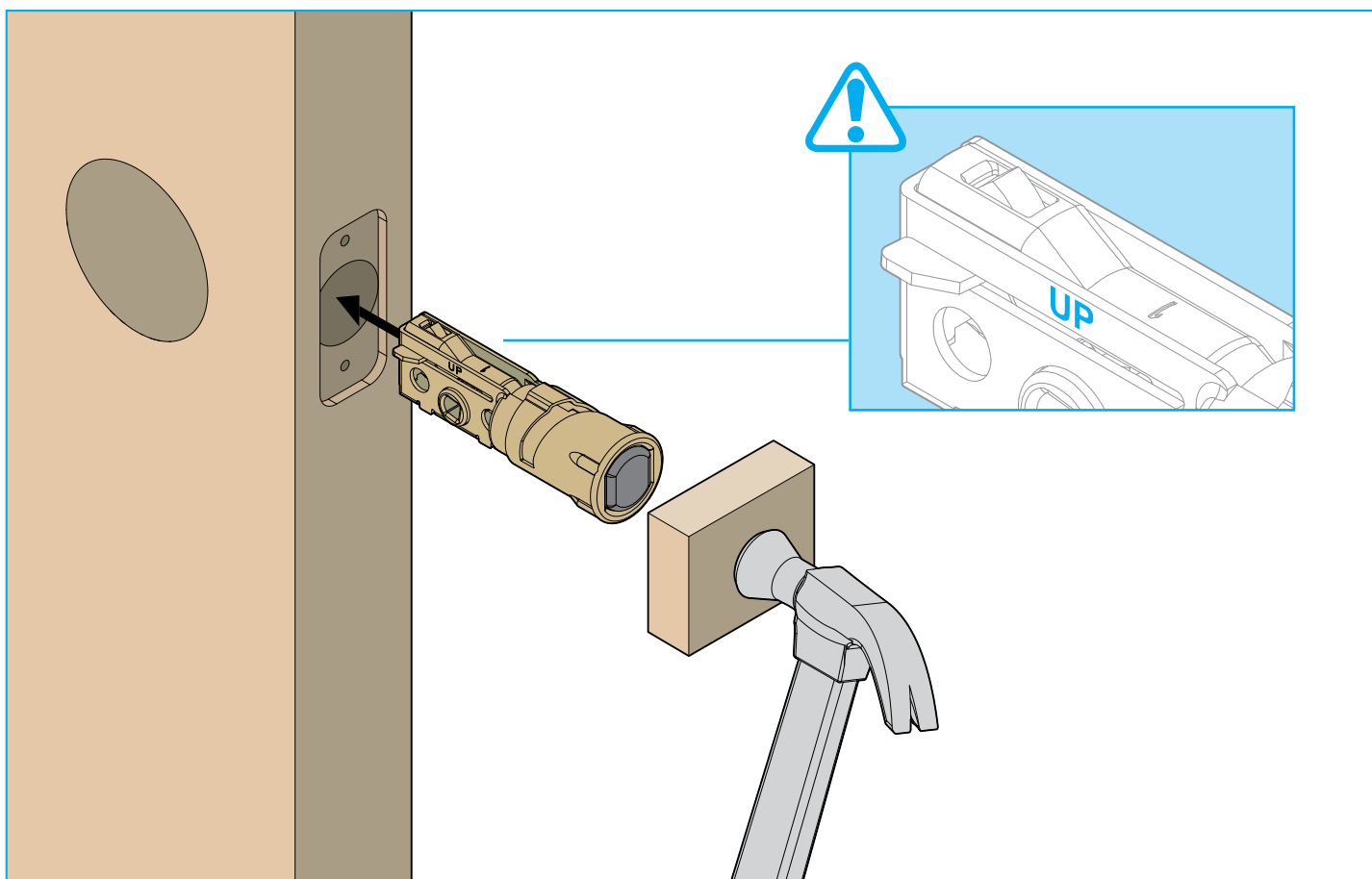


2 Install latch and strike

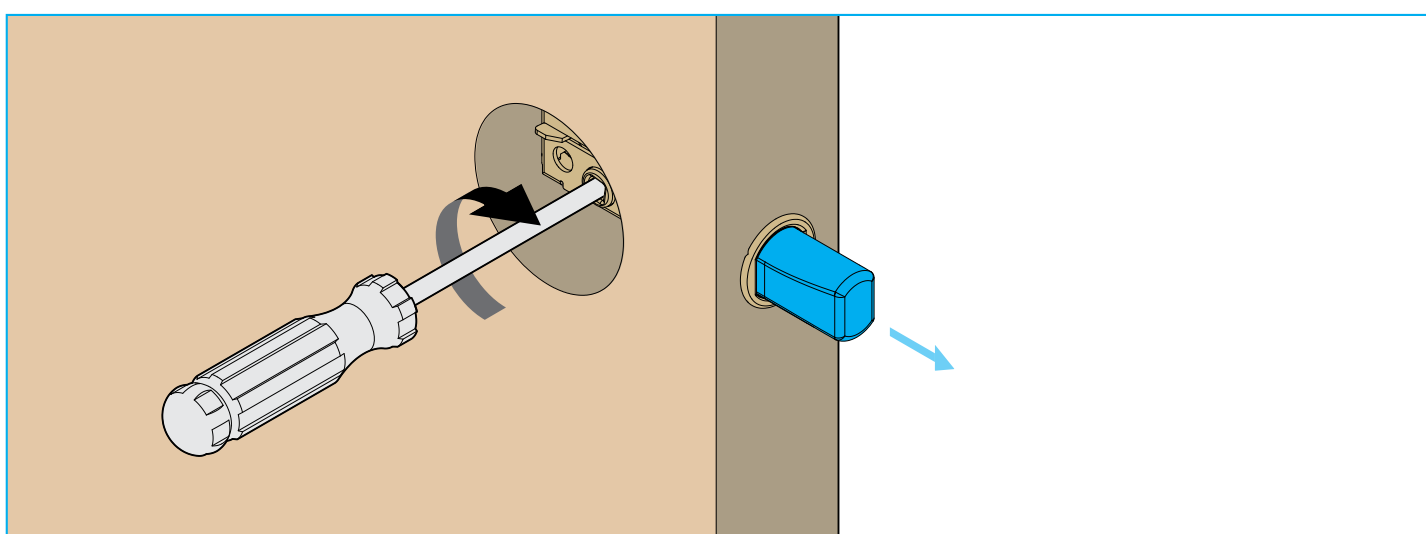
Use screwdriver to retract latch bolt.



Use a hammer and wood block to drive the latch into the door until it is flush with the door edge. Make sure the word “UP” faces upward.

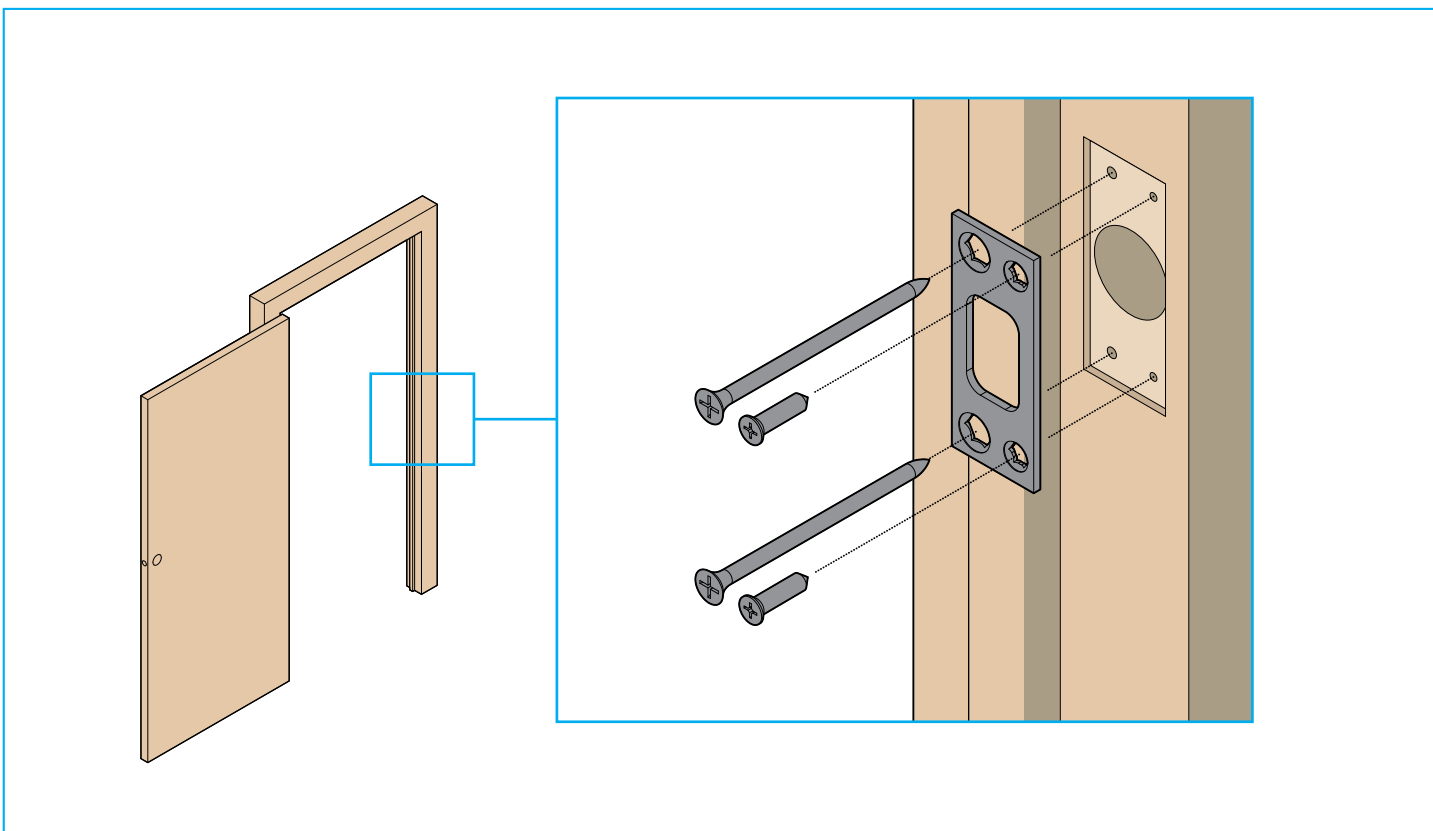


Use screwdriver to extend latch bolt again.



2 Install latch and strike

Install strike on door frame with the longer screws closest to the jamb.



2 Install latch and strike

Install strike on door frame with the longer screws closest to the jamb.

